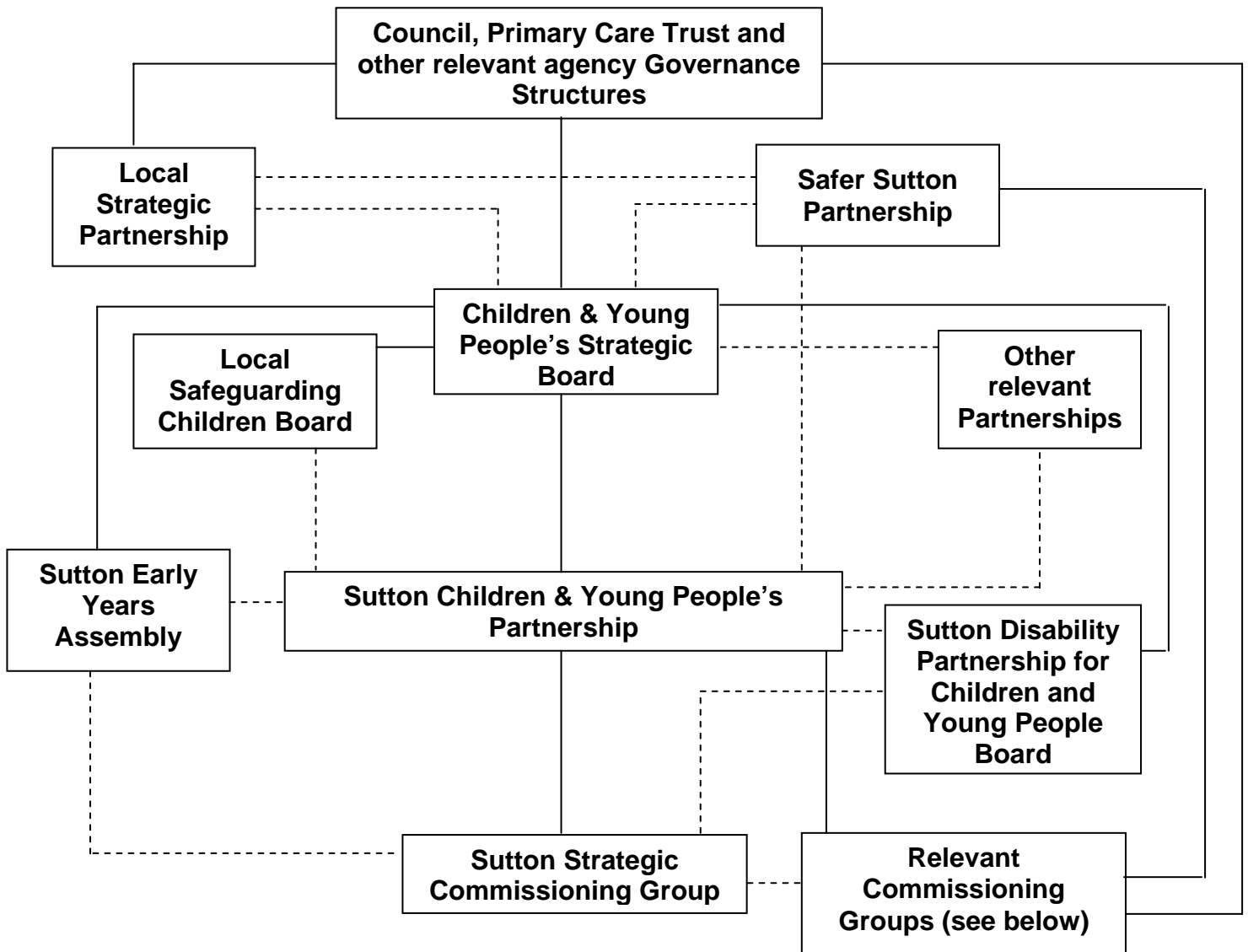


## Governance and Inter-agency Partnerships

In response to Every Child Matters we have further developed our partnership structures and the Sutton Children and Young People's Partnership and the Children and Young People's Strategic Board to provide the governance for our Children's Trust Arrangements. They operate within the wider context of the Council's and Primary Care Trust's structures of governance and make references and recommendations to the relevant Council and Primary Care Trust committees.

The Chart below identifies the Strategic Network and lines of accountability.



## **Children and Young People's Strategic Board**

The Children and Young People's Strategic Board has, as the name suggests, the strategic role in promoting, developing and overseeing the Children's Trust arrangements across the whole of Sutton. It has very senior representation from Councillors, education, children's social services, health, the voluntary sector and the police and is chaired by the Council's Chief Executive providing a clear link to the Local Strategic Partnership. General Practitioners are represented on the Children and Young People's Strategic Board through the representatives from the Professional Executive Committee and Primary Care Trust.

The Children and Young People's Strategic Board co-ordinates overall the work of the four key partnerships the Sutton Children and Young People's Partnership, the Early Years Assembly, the Sutton Disability Partnership for Children and Young People and the Local Safeguarding Children Board to ensure the delivery of multi-agency plans to improve outcomes for children and young people. Associated partnerships include schools partnerships, the Sutton Post 14 Learning Partnership and the Safer Sutton Partnership.

## **Sutton Children and Young People's Partnership**

The Sutton Children and Young People's Partnership has achieved significant changes in outcomes, culture and ways of working across all aspects of inter-agency working for children and young people and continues to do so. It has a much wider membership than the Children and Young People's Strategic Board, and makes recommendations and receives references from the Children and Young People's Strategic Board on strategic issues. The Sutton Children and Young People's Partnership has a monitoring role in relation to inter-agency working and provides a high-level oversight of inter-agency operational performance.

## **Sutton Local Safeguarding Children Board**

The Local Safeguarding Children Board is accountable to the Children and Young People's Strategic Board. The Children and Young People's Strategic Board will monitor the effectiveness of the Sutton Local Safeguarding Children Board through receipt of an annual report and business plan. The Sutton Local Safeguarding Children Board and the Sutton Children and Young People's Partnership will work particularly closely on the preventative aspects of their respective remits. The chairperson is the Strategic Director, Children, Young People and Learning Services who is the statutory Director of Children's Services who also chairs the Children and Young People's Partnership.

## **Sutton Disability Partnership for Children and Young People Board**

This is the governing body for our Sutton Disability Partnership for Children and Young People. Its focus is children and young people who face barriers to achieving their full potential because they are disabled or have long term health conditions. The remit of the Partnership Board includes:

To commission and coordinate services so that:

- Children and young people are supported to participate in family and community activities and facilities
- Health, education and social care services are organised around the needs of children and young people and their families, with coordinated multi-agency

assessments leading to prompt, convenient, responsive and high quality multi-agency interventions that maximise the child's ability to reach his or her full potential.

The Board is a partnership comprising representatives of four groups; statutory agencies, voluntary and community organisations, parents-carers, and those with specialist interest or expertise. Disabled children and young people do not sit on the Board itself, but arrangements are in place to ensure their views are heard and responded to. The balanced composition of Sutton Disability Partnership for Children and Young People is seen as a strength and has been used as an example of good practice for other local authorities.

The Board reports to the Sutton Children and Young People's Partnership and the Children and Young People's Strategic Board. Resources for services are delegated to the Board by the London Borough of Sutton and Sutton and Merton Primary Care Trust and the Board is ultimately accountable to them.

### **Sutton Early Years Assembly**

The Sutton Early Years Assembly has an open membership for anyone working within the field of Early Years in the London Borough of Sutton. The Assembly enhances early education, development, health, play and care provision with Sutton and identified needs of children in the Borough and ensures appropriate responses. The Assembly reports regularly to the Children and Young People's Strategic Board and unites in genuine partnership the private, voluntary and maintained sector and other childcare interests, both Council and multi-agency bodies.

### **Local Strategic Partnership**

The Local Strategic Partnership is set up to help meet the wide range of challenges our borough faces both now and in the future. The Partnership brings together hundreds of local groups and businesses to create and deliver exciting new strategies to boost economic growth and improve our overall quality of life. Government advises all local councils take the lead in forming Local Strategic Partnerships to improve public services, deliver sustainable growth, regenerate depressed areas economically, socially and physically, and most importantly involve a wide range of people from within the borough in deciding how to achieve those aims.

### **Sutton Strategic Commissioning Group**

The Sutton Strategic Commissioning Group is responsible for monitoring and evaluating the Children & Young People's Plan, auditing current commissioning in the light of the plan, and preparing the new plan. This group reports to the Sutton Children & Young People's Partnership, which is the partnership responsible for the Children & Young People's Plan. The Sutton Children and Young People's Partnership has a responsibility to monitor and evaluate the plan, and adjust services accordingly. The Sutton Strategic Commissioning Group carries out this function for the Sutton Children and Young People's Partnership and provides reports to it. These reports also feed into other monitoring groups, particularly the Council's Learning Services Performance Committee.

## **Safer Sutton Partnership**

Safer Sutton Partnership which is a partnership between the Police and the Council benefits from innovative arrangements whereby the Police, the Community Partnership Unit and the Safer Communities Team are co-located and managed by a single officer jointly accountable to the Council and the Police. The Safer Sutton Partnership is described in more detail on page15.

## **Other Partnerships**

The main school partnerships are the Primary and Special Education Planning Group and the Secondary Education Planning Forum. These two partnerships have representation from head teachers and governors and provide direction and information to inform policies and initiatives such as the formation of this Children and Young People's Plan. The other key school partnership is the Schools Forum. The Forum has representation from primary, special and secondary head teachers and governing bodies to discuss and influence the funding allocations to schools and to recommend growth bids and capital bids within the schools budget.

The Sutton Post 14 Learning Partnership has representatives from schools, colleges, Learning and Skills Council, Connexions, education, employment and training to take forward the agenda for those young people post 14 in the borough, developing co-ordinated and coherent provision for employment, education and training.

The Children, Young People and Learning Services Executive Management Team is chaired by the Strategic Director of Children, Young People & Learning Services and has representation at Executive Head level from education, children's social services and health. It therefore has a key policy and overview role in relation to the development of children's services. The Executive Management Team works closely with both the Children and Young People's Strategic Board and Sutton Children and Young People's Partnership, with which it has significant shared membership and relates the wider inter-agency strategic agenda to specific services and management arrangements.

Other relevant joint commissioning groups:-

Youth Crime Reduction Group  
Young People's Substance Misuse Joint Commissioning Group  
Children's Fund  
Pathfinder Joint Commissioning Group  
Sure Start Board  
Teenage Pregnancy  
Adoption Consortium  
Children and Families Panel  
Special Educational Needs Panel  
Respite Panel  
Day Care Panel